

Microwave Sensor for Automatic Doors

Merkur is the newest generation microwave sensor from Bircher-Reglomat. It's unique design was engineered to bring together the latest features that sensor technology has to offer.

Planar (Flat) Antenna – This feature allows you to create a precise detection field (see specification table) and virtually eliminates the emission of residual back-waves. With the flat antenna the sensor can be aimed almost straight down the face of the header without being triggered by the sliding doors. This new antenna also provides exceptional cross traffic fade out.

Detection Field Targeting – With this feature you can aim the antenna by rotating it from 30° left to 30° right and tilting it from 5° to 90° down giving you the ability to place your detection field right where you want it.

Enhanced Motion Sensitivity – The sensitivity can be adjusted in nine steps. At the setting of 9 (the most sensitive), after initial detection this sensor will detect even minute movement making it one of the safest microwave detectors on the market.

Direction Recognition – Either Bi-directional or Uni-directional detection can be selected.

Detection Field Adjustments – The detection field dimensions are adjustable by means of removable tie clips.

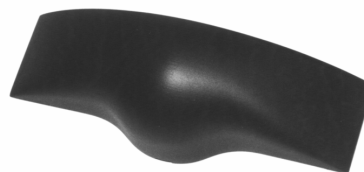
Microprocessor Technology – Filters out various interference's such as heavy rain or snowfall, extraneous radio frequencies and header vibration.

Reglobeam™ Remote Control – With this unique remote control unit you can adjust sensitivity & directional settings. There are pre-programmed settings built in that you can use for various typical applications. Also, the sensor communicates with the remote control to display current settings with lighted buttons. *Initial activation sensitivity and directional settings can be made without the use of the Reglobeam.

Mounting Options – The Merkur can be mounted on the face of a header, on the ceiling or concealed inside of the header if a cutout is provided. The sleek shell design is highly vandal resistant. A template sticker is supplied for easy surface preparation.

- ◆ For the Actuation of Automatic Doors and Escalators
- ◆ Planar antenna allows precise detection fields
- ◆ Adjustable antenna gives you targeting capabilities
- ◆ Exceptional cross traffic fade out
- ◆ Operates on the highly sensitive K-Band range
- ◆ Microprocessor filters out extraneous interference
- ◆ Remote Control makes settings and adjustments a snap
- ◆ Exceeds ANSI standards and meets FCC requirements

Merkur

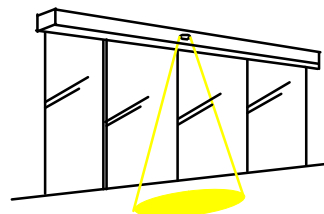


Reglobeam™ Remote Control

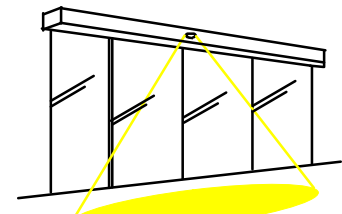


Offers two-way communication

Detection Field



Minimum field dimension.
Width = 20" x Depth = 20"
At a mounting height of 86"

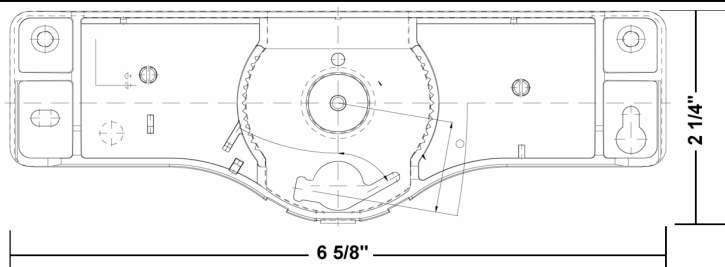


Maximum field dimension.
Width = 156" x Depth = 98"
At a mounting height of 86"

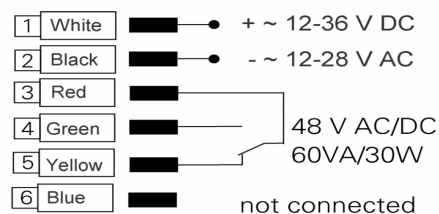
MERKUR TECHNICAL DATA

Field dimensions	Minimum 20" x 20" (0.5 m x 0.5 m) to a Maximum of 98" x 156" (2.5 m x 4 m) at a mounting height of 86" or 2.2 m	Adjustable with removable clips
Mounting height	Maximum – 14' 2" or 4 m	Height affects field dimensions
Detection range	Maximum frontal – 7' or 2 m	
Sensitivity adjustment	Adjustable in nine steps	With or without remote control
Slow zone sensitivity adjustment	Adjustable in nine steps	With remote control only
Direction recognition	Select unidirectional or bi-directional	With or without remote control
Antenna	Planar (flat)	
Type & frequency of microwave	K-Band / 24.125 GHz	Highly sensitive
Operating voltage	12-36 VDC / 12-28 VAC	
Current consumption	ca. 70 mA / 24 VAC	
Relay output	Changeover contact Max switching voltage 48 VAC/DC Max switching current 0.5A AC / 1 A DC Max switching power 60 VA / 30 W	
Relay hold time	0.2-4 sec.	Adjustable only with remote / default = 1.5s
Switching mode	Active / NC or Passive / NO	Adjustable only with remote / default = NC
Function indication	Red LED	Lights on actuation
Connection type	RJ plug / cable 9' long	Reverse polarity protected
Protection class	IP 54 / NEMA 12	
Housing material	ABS	
Operating temperature	-4°F to 140°F or -20°C to 60°C	
Electromagnetic compatibility	According to EMC directive 89/336 EEC and FCC regulations	

Dimensions of the MERKUR



Connection Diagram



Product	Order Code
Merkur /31	113000
Remote Control / Reglobeam	89420
Weather Protection	MWH-1
Adaptor for Revolving Doors or semi-circular headers, 7 to 12ft or 2 to 3.6 m diameter	114000
Adaptor for Revolving Doors or semi-circular headers, 12 to 19ft or 3.6 to 6 m diameter	114002 (7/2003)