

# AIR 20

ACTIVE INFRARED PRESENCE SENSOR

AIR 20-V1-2000 9/00

**AIR 20** is an Active Infrared Sensor for detecting the presence of persons in threshold areas, for collision protection of moving doors or for the activation of drive-through windows, ATMs and automatic doors in confined areas.

**Scanning Range Adjustments** – The detection range can be manually set with an adjustment screw. (See specification table).

**Mounting Options** – AIR 20 is the most compact IR sensor available (only 2 3/16" x 1 5/16" x 1 7/8") for Automatic Door Safety & Activation. It can be mounted stationary in a threshold area or ride along on a moving door. It can be surface mounted with a bracket or recessed into a header. *The use of an additional lens may adversely affect the performance of the AIR 20.* When mounting AIR 20's side by side, a minimum of 2" between detection fields is required.

**Background Suppression** – The background is recognized but ignored. It is the object which enters the detection field that creates the reflection, causing the sensor to react. Because the background is ignored the sensor can be mounted "ride along" on a moving door. No background is required. The reflectance value of the background has no effect on the sensor. *No transmitter failure indication or self testing function is available on this unit.*

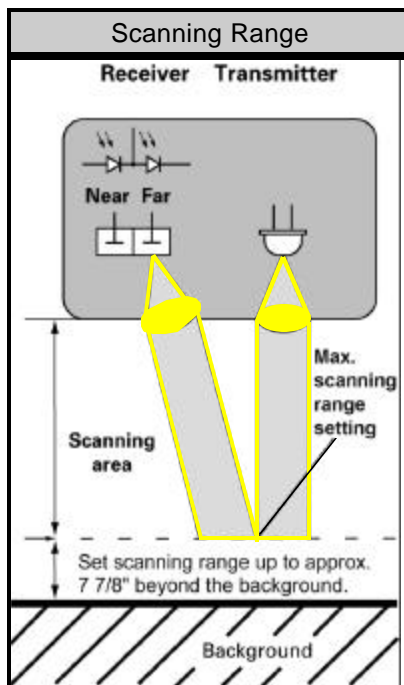
**Optional Relay or PNP Output** – The relay output signal is fixed N/O. PNP output available on request.

**Fluorescent & Low-E Light** – will not affect the function of the AIR 20. However, ultra violet or halogen lamps can cause malfunctions if they are placed within the line of sight of the sensor.

- ◆ Superior Presence Detection in the threshold and collision prone areas of Automatic Doors.
- ◆ Activation sensor for Drive-through windows, ATMs etc.
- ◆ Background Suppression for "ride along" mounting.
- ◆ Adjustable scanning ranges.
- ◆ Multiple units can be used to protect an extended area.
- ◆ Super compact design allows for easy recess or external mounting.
- ◆ Relay or PNP output available.



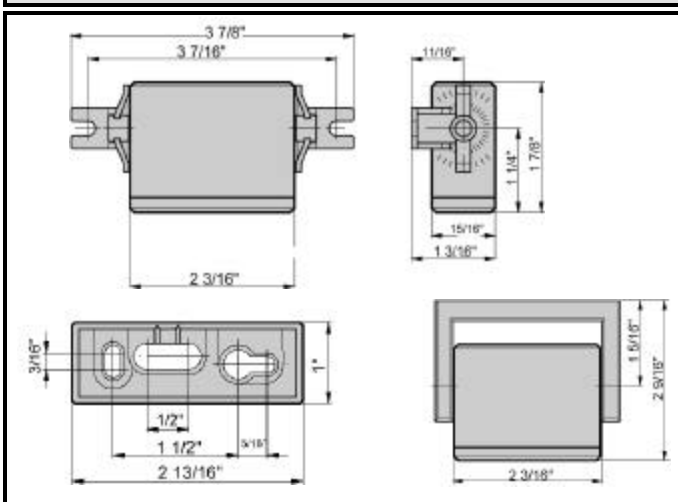
AIR 20 Active Infrared Sensor.



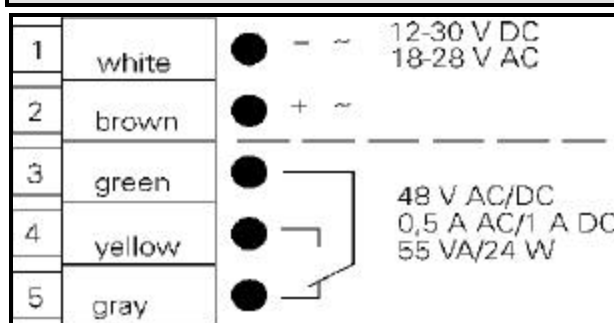
**AIR 20 TECHNICAL DATA**

Scanning area	1" to 98"	On Kodak white paper
Adjustable scanning range	from 47 1/4" to 98"	Min to max.
Scanning field	Approx. 1 9/16" x 1 9/16"	At scanning range of 47 1/4"
Type of light	Active infrared	Pulsed alternating light
B/w difference	<15 3/4"	At scanning range of 59"
Operating voltage	18-28 VAC / 12-30 VDC	
Current consumption	< 50 mA	
Signal output	Relay 1 x floating change over contact –active on de- tection. max. switching voltage 48 V AC/DC max. switching current 0.5 A AC/1 A DC max. switching power 55 VA / 24 W	PNP signal on request
Response time	Approx. 50 ms.	
Switching mode	Passive N/O	Fixed
Function indication	Red LED	Lights on activation
Connection type	Plug-in screw terminal	Cable L=16'
Protection class	IP 52 / NEMA 12	
Optics surface	PMMA	
Housing material / color	ABS	
Operating temperature	-4°F to 140°F	
Electromagnetic compatibility	⊕ According to EMC directive	89/336 EEC
Weight	Approx. 1.8 oz.	Without cable

**Dimensions of the AIR 20**



**Connection Diagram**



**Mounting options**



**Ordering Information**

Product	Order Code
AIR 20-H/31 includes swivel bracket, Mounting bracket & cable	54001

\*Regomat reserves the right to alter technical specifications when it is in accordance with product improvement.